

Sensitive Plant Survey for the Coronado National Forest 2003

Final Report

19 December 2003



Prepared by:

Marc A. Baker
Southwest Botanical Research
1217 Granite Creek Lane
Chino Valley, Arizona 86323

Project No. 2003-01-FLORA: In fulfillment of Coronado National Forest contract no. 43-8197-3-0038



Figure 70. Habitat of *Hexalectris revoluta* in tributary of Cave Creek, Santa Rita Mountains.

Site 2. Santa Ritas; Cave Creek, T20S, R15E

Mount Wrightson 7.5' USGS topographic quadrangle; Santa Cruz County; 12R 05 22 610-620mE 35 09 500-735mN; N31° 43.34' W110° 45.68'; 1600-1615m (5200-5240ft), 11.3km NW of Sonoita, 2km NW of the confluence of Gardner Canyon and Cave Creek, woodland with *Acacia biuncifera*, *Agave palmeri*, *Cercocarpus montanus*, *Dasyllirion wheeleri*, *Garrya wrightii*, *Juniperus deppeana*, *Muhlenbergia longiligula*, *Nolina microcarpa*, *Opuntia engelmannii*, *O. phaeacantha*, *Pinus cembroides*, *Quercus rugosa*, *Rhus trilobata*, *Rhus virens*, and *Yucca schottii*. Local along both sides of small side canyon. Baker 15410, 28 may 2003.

Hexalectris warnockii (Texas purple-spike)

Description

Saprophytic perennial with a nearly leafless, red-brown erect stem to 30cm tall. The rather weak raceme has up to 10 flowers. Corolla dark purple except for the pale-pink to white three-lobed lip.

Photographs from <http://www.fl-orchid.com/catalog.htm>.

Habitat

Leaf mold in shaded woodland.



Figure 66. Flower (face view) of *Hexalectris revoluta* in McCleary Canyon.



Figure 67. Flower (face view) of *Hexalectris revoluta* in McCleary Canyon.



Figure 68. Flower (side view) of *Hexalectris revoluta* in McCleary Canyon.

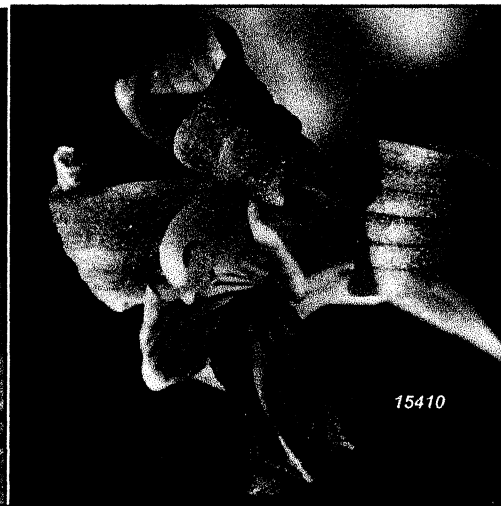


Figure 69. Flower of *Hexalectris revoluta* in tributary of Cave Creek, Santa Rita Mountains.

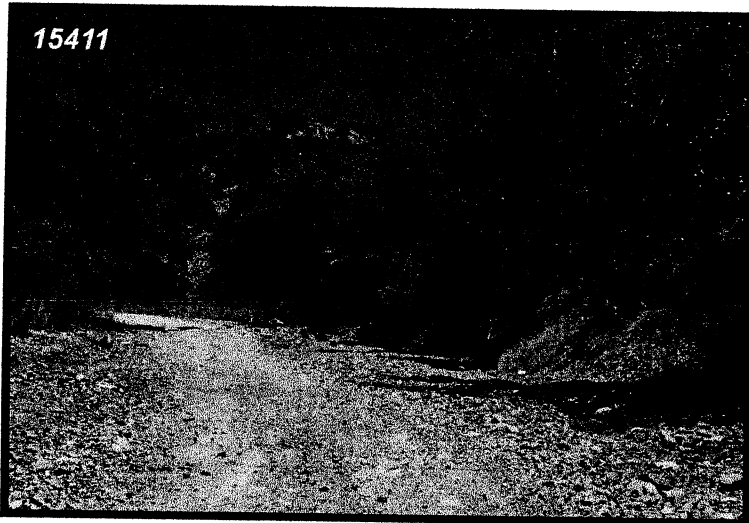


Figure 63. Habitat of *Hexalectris revoluta* in McCleary Canyon.



Figure 64. Flowering shoot of *Hexalectris revoluta* in McCleary Canyon.



Figure 65. Habitat of *Hexalectris revoluta* in McCleary Canyon.