

[Area of Interest \(AOI\)](#) |
 [Soil Map](#) |
 [Soil Data Explorer](#) |
 [Shopping Cart \(Free\)](#)

View Soil Information By Use: All Uses Printable Version Add to Shopping Cart

[Intro to Soils](#) |
 [Suitabilities and Limitations for Use](#) |
 [Soil Properties and Qualities](#) |
 [Ecological Site Assessment](#) |
 [Soil Reports](#)

Search ?

Properties and Qualities Ratings ?

[Open All](#) |
 [Close All](#) ?

Soil Chemical Properties ? ?

Soil Erosion Factors ? ?

Soil Physical Properties ? ?

- Available Water Capacity
- Available Water Supply, 0 to 100 cm
- Available Water Supply, 0 to 150 cm
- Available Water Supply, 0 to 25 cm
- Available Water Supply, 0 to 50 cm
- Bulk Density, 15 Bar
- Bulk Density, One-Tenth Bar
- Bulk Density, One-Third Bar
- Linear Extensibility
- Liquid Limit
- Organic Matter
- Percent Clay
- Percent Sand
- Percent Silt
- Plasticity Index
- Saturated Hydraulic Conductivity (Ksat)
- Saturated Hydraulic Conductivity (Ksat), Standard Classes
- Surface Texture
- Water Content, 15 Bar
- Water Content, One-Third Bar

Soil Qualities and Features ? ?

- AASHTO Group Classification (Surface)
- Depth to a Selected Soil Restrictive Layer
- Depth to Any Soil Restrictive Layer
- Drainage Class
- Frost Action
- Frost-Free Days
- Hydrologic Soil Group

Map Unit Name

[View Description](#) |
 [View Rating](#)

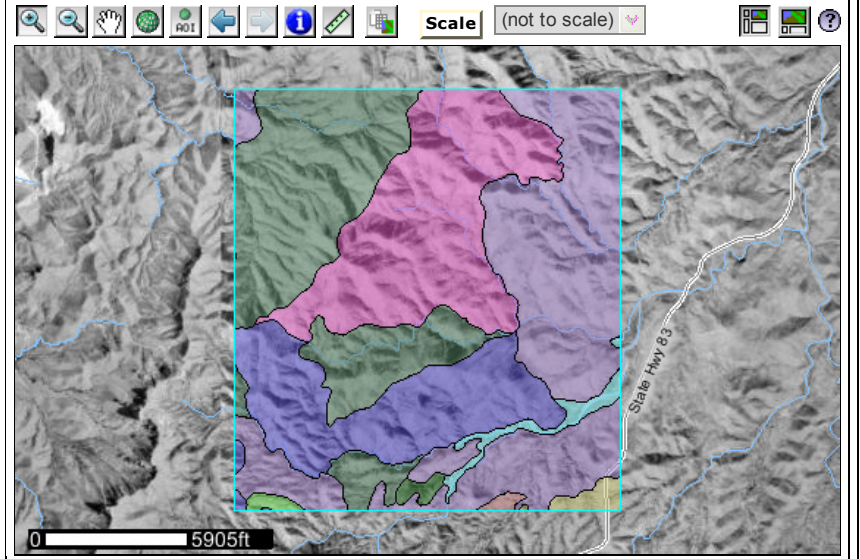
View Options ? ?

- Map
- Table
- Description of Rating
- Rating Options
 - Detailed Description

Advanced Options ? ?

- Aggregation Method No Aggregation Necessary
- Tie-break Rule Lower Higher

Map — Map Unit Name ?



Tables — Map Unit Name — Summary By Map Unit ?

Summary by Map Unit — Santa Cruz and Parts of Cochise and Pima Counties, Arizona ?

Map unit symbol	Map unit name	Rating	Acres in AOI	Percent of AOI
BhD	Bernardino-Hathaway association, rolling	Bernardino-Hathaway association, rolling	20.6	0.3%
CmE	Casto very gravelly sandy loam, 10 to 40 percent slopes	Casto very gravelly sandy loam, 10 to 40 percent slopes	28.6	0.5%
CoE	Chiricahua cobbly sandy loam, 10 to 45 percent slopes	Chiricahua cobbly sandy loam, 10 to 45 percent slopes	1,010.5	16.0%
CtB	Comoro soils, 0 to 5 percent slopes	Comoro soils, 0 to 5 percent slopes	104.5	1.7%
FrF	Faraway-rock outcrop complex, 30 to 60 percent slopes	Faraway-rock outcrop complex, 30 to 60 percent slopes	0.4	0.0%
HaF	Hathaway gravelly sandy loam, 20 to 50 percent slopes	Hathaway gravelly sandy loam, 20 to 50 percent slopes	62.4	1.0%
LcF	Lampshire-Chiricahua association, steep	Lampshire-Chiricahua association, steep	1,418.8	22.5%
LgF	Lampshire-Graham-Rock outcrop association, steep	Lampshire-Graham-Rock outcrop association, steep	1,631.9	25.9%
McF	Mabray-Chiricahua-Rock outcrop association, steep	Mabray-Chiricahua-Rock outcrop association, steep	1,995.0	31.6%
Rn	Rock outcrop-Lithic Haplustolls association	Rock outcrop-Lithic Haplustolls association	35.4	0.6%
Totals for Area of Interest			6,307.9	100.0%

Description — Map Unit Name ?

A soil map unit is a collection of soil areas or nonsoil areas (miscellaneous areas) delineated in a soil survey. Each map unit is given a name that uniquely identifies the unit in a particular soil survey area.

Rating Options — Map Unit Name ?

Aggregation Method: No Aggregation Necessary

Tie-break Rule: Lower

[View Description](#) [View Rating](#)

Parent Material Name

Representative Slope

Unified Soil Classification (Surface)

Water Features



[Area of Interest \(AOI\)](#) |
 [Soil Map](#) |
 [Soil Data Explorer](#) |
 [Shopping Cart \(Free\)](#)

View Soil Information By Use: All Uses Printable Version Add to Shopping Cart

[Intro to Soils](#) |
 [Suitabilities and Limitations for Use](#) |
 [Soil Properties and Qualities](#) |
 [Ecological Site Assessment](#) |
 [Soil Reports](#)

Search

Properties and Qualities Ratings
[Open All](#) [Close All](#)

Soil Chemical Properties
 Soil Erosion Factors
 Soil Physical Properties

Soil Qualities and Features

AASHTO Group Classification (Surface)
 Depth to a Selected Soil Restrictive Layer
 Depth to Any Soil Restrictive Layer
 Drainage Class
 Frost Action
 Frost-Free Days
 Hydrologic Soil Group

Map Unit Name
[View Description](#) [View Rating](#)

View Options

Map
 Table
 Description of Rating
 Rating Options Detailed Description

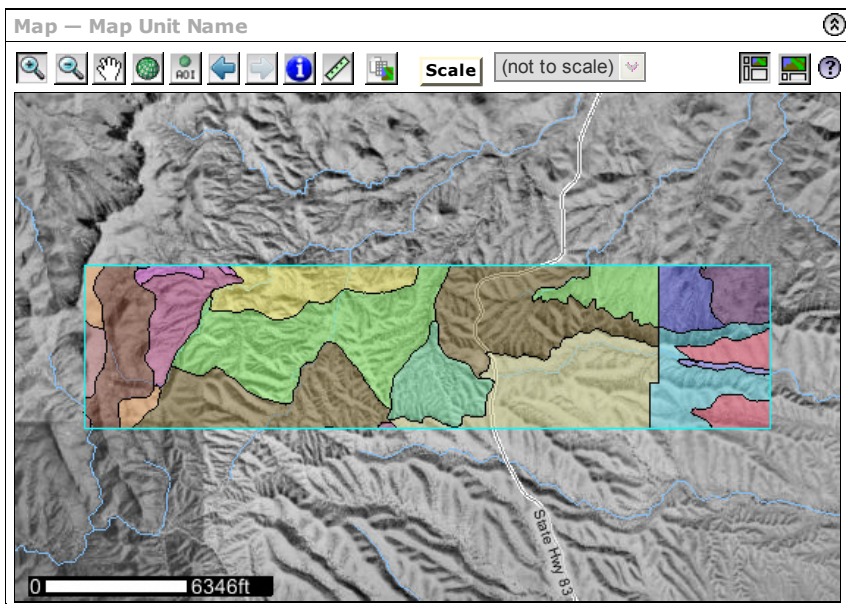
Advanced Options

Aggregation Method: No Aggregation Necessary
 Tie-break Rule: Lower Higher

[View Description](#) [View Rating](#)

Parent Material Name
 Representative Slope
 Unified Soil Classification (Surface)

Water Features



Tables — Map Unit Name — Summary By Map Unit

Summary by Map Unit — Pima County, Arizona, Eastern Part


Map unit symbol	Map unit name	Rating	Acres in AOI	Percent of AOI
6	Bernardino-Tombstone association, 5 to 16 percent slopes	Bernardino-Tombstone association, 5 to 16 percent slopes	153.6	3.1%
10	Caralampi extremely gravelly sandy loam, 15 to 45 percent slopes	Caralampi extremely gravelly sandy loam, 15 to 45 percent slopes	318.5	6.4%
19	Comoro sandy loam, 0 to 2 percent slopes	Comoro sandy loam, 0 to 2 percent slopes	0.6	0.0%
23	Deloro-Andrada complex, 5 to 35 percent slopes	Deloro-Andrada complex, 5 to 35 percent slopes	155.8	3.1%
37	Keysto extremely gravelly fine sandy loam, 2 to 8 percent slopes	Keysto extremely gravelly fine sandy loam, 2 to 8 percent slopes	22.4	0.4%
84	White House-Caralampi complex, 5 to 25 percent slopes	White House-Caralampi complex, 5 to 25 percent slopes	184.1	3.7%
Subtotals for Soil Survey Area			835.0	16.7%

Summary by Map Unit — Santa Cruz and Parts of Cochise and Pima Counties, Arizona


Map unit symbol	Map unit name	Rating	Acres in AOI	Percent of AOI
BgF	Barkerville-Gaddes association, steep	Barkerville-Gaddes association, steep	58.8	1.2%
BhD	Bernardino-Hathaway association, rolling	Bernardino-Hathaway association, rolling	1,027.3	20.6%
CgE	Caralampi gravelly sandy loam, 10 to 40 percent slopes	Caralampi gravelly sandy loam, 10 to 40 percent slopes	661.4	13.2%
CmE	Casto very gravelly sandy loam, 10 to 40 percent slopes	Casto very gravelly sandy loam, 10 to 40 percent slopes	36.7	0.7%
CoE	Chiricahua cobbly sandy loam, 10 to 45	Chiricahua cobbly sandy loam, 10 to 45	1.6	0.0%

Web Soil Survey

	percent slopes	percent slopes		
FrF	Faraway-rock outcrop complex, 30 to 60 percent slopes	Faraway-rock outcrop complex, 30 to 60 percent slopes	83.9	1.7%
HaF	Hathaway gravelly sandy loam, 20 to 50 percent slopes	Hathaway gravelly sandy loam, 20 to 50 percent slopes	1,153.4	23.1%
HhE2	Hathaway soils, 1 to 40 percent slopes, eroded	Hathaway soils, 1 to 40 percent slopes, eroded	267.9	5.4%
McF	Mabray-Chiricahua-Rock outcrop association, steep	Mabray-Chiricahua-Rock outcrop association, steep	318.0	6.4%
TrF	Tortugas-Rock outcrop complex, 25 to 60 percent slopes	Tortugas-Rock outcrop complex, 25 to 60 percent slopes	328.0	6.6%
WgE	White House gravelly loam, 10 to 35 percent slopes	White House gravelly loam, 10 to 35 percent slopes	226.7	4.5%
Subtotals for Soil Survey Area			4,163.6	83.3%
Totals for Area of Interest			4,998.7	100.0%

Description — Map Unit Name 

A soil map unit is a collection of soil areas or nonsoil areas (miscellaneous areas) delineated in a soil survey. Each map unit is given a name that uniquely identifies the unit in a particular soil survey area.

Rating Options — Map Unit Name 

Aggregation Method: No Aggregation Necessary

Tie-break Rule: Lower