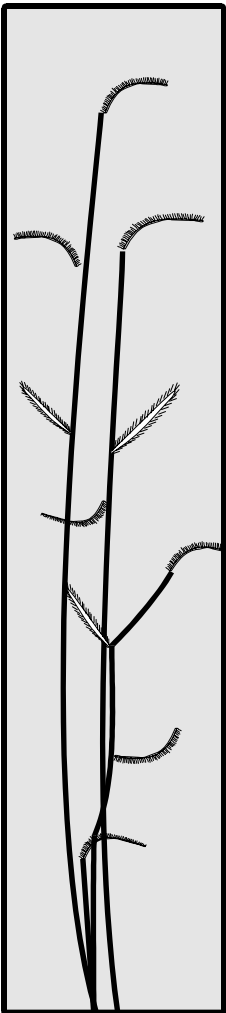


United States
Department of Agriculture

Forest Service

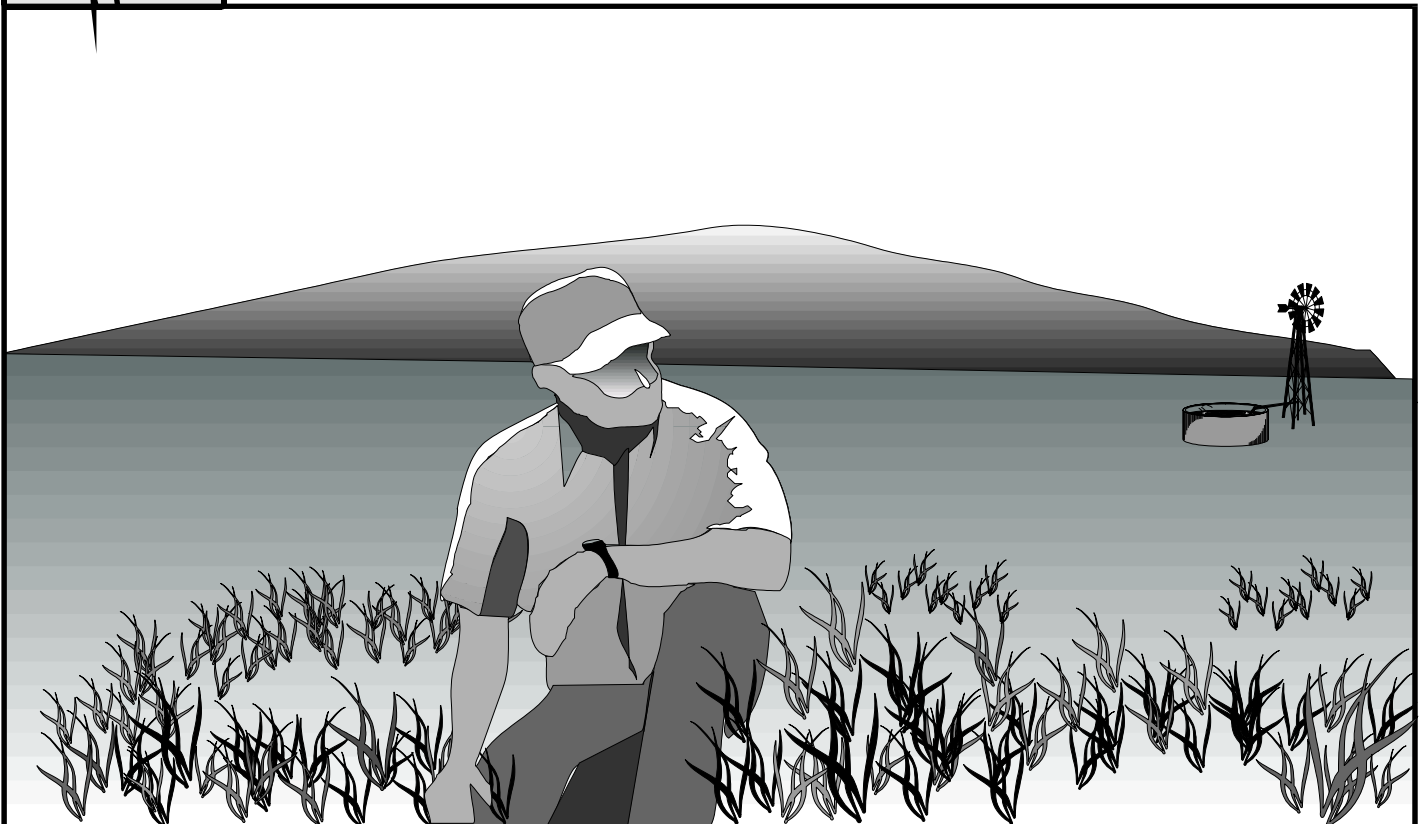
Rocky Mountain Region
Denver, Colorado

August 1996



Rangeland

Analysis And Management Training Guide



RANGELAND ANALYSIS AND MANAGEMENT TRAINING GUIDE

**ROCKY MOUNTAIN REGION
U.S. FOREST SERVICE**

August 1996
PDF October 2004

ACKNOWLEDGMENTS

The USDA Forest Service, Rocky Mountain Region wishes to acknowledge the participation and support of several individuals, agencies, and organizations in the preparation of the Rangeland Analysis and Management Training Guide. The majority of the production of the Guide was done by a work group consisting of Floyd Reed, Charlie Richmond, and David Wheeler. David is commended for his leadership and numerous hours on preparing the final document.

We also acknowledge the assistance of the many rangeland managers throughout the Region that field-tested the 1993 draft and the 1994 final Guide, and provided comments and suggestions for this revision. A team of Forest Service employees compiled these comments and recommended specific changes in the text and layout. This team consisted of Steve Currey, Michele Girard, Larry Klock, Angela Safranek, and Leslie Stewart. Word processing and diagrams were done by Krista Schnell, Ben Scott, Diana Menapace, and Tricia Harrison. The cover was produced by Pam Case.

The University of Wyoming under the leadership of Bill Laycock spent considerable time reviewing the document and making invaluable suggestions. Roy Roath at Colorado State University provided comments and was an instructor at one of the field training sessions. Ned Habich with the BLM Service Center in Denver provided positive comments and literature that was incorporated into the Guide. Rocky Smith with the Colorado Environmental Coalition also reviewed the Guide and provided considerable comments and suggestions.

The time these individuals and organizations put into producing this Guide has been invaluable. Their efforts have only served to strengthen and improve this document. A very big, and sincere, "THANK YOU" to all of you.

United States
Department of
Agriculture

Forest
Service

Rocky
Mountain
Region

P.O. Box 25127
Lakewood, CO 80225-0127
Delivery: 740 Simms St.
Golden, CO 80401

Reply to: 2200 Rangeland Management

Date: August 5, 1996

Subject: Rangeland Analysis and Management Training Guide

To: Forest Supervisors

Rangelands are valuable and extensive ecosystems in the Rocky Mountain Region. They comprise about 50 percent of the Region's total land area. Rangelands provide clean water, forage for grazing and browsing animals, cover for many wildlife species, and a variety of recreational opportunities for our visitors. Rangelands are of vital economic importance to the many rural communities throughout our five state area.

As we continue our focus on ecosystem management, rangelands will play a critical role. I hope each of you will look at rangelands at a broader perspective, focusing on sustainable natural processes that provide healthy ecosystems for the needs and values of a diverse American public.

The revision of this Guide is an important step in continuing the analysis and management processes we began in 1994. There has been a tremendous amount of energy and expertise put into the development and improvement of this Guide from personnel within the Forest Service, other agencies, research, and universities. I would like to thank all those that contributed to this effort. The quality of the Guide is a testimony to those who have used it and suggested improvements, and to the countless hours spent in producing it.

ELIZABETH ESTILL
Regional Forester

Enclosure

OVERVIEW

INTRODUCTION 1-1

OBJECTIVES 1-1

DIRECTION 1-1

GENERAL INSTRUCTIONS 1-2

ECOLOGICAL CLASSIFICATION 1-3

INTEGRATED RESOURCE INVENTORY 1-4

RANGELAND PLANNING

PURPOSE 2-1

LEGAL REQUIREMENTS 2-1

COORDINATION, COOPERATION, AND CONSULTATION 2-7

RANGELAND PLANNING PROCESS 2-10

STEP 1: NFMA COMPLIANCE 2-10

STEP 2: NEPA COMPLIANCE 2-14

STEP 3: AMP PREPARATION 2-18

RANGELAND INVENTORY

INTRODUCTION 3-1

PRIORITIES AND INTENSITY 3-2

OFFICE PREPARATION 3-4

ALLOTMENT FAMILIARIZATION 3-5

FIELD DATA COLLECTION 3-6

APPLICATION OF INVENTORY DATA 3-10

ALLOTMENT MAP STANDARDS 3-21

INVENTORY METHODS 3-29

 Exhibit OP: Ocular Plant Composition 3-37

 Exhibit CF: Cover-Frequency Transect 3-49

 Exhibit LI: Line Intercept 3-63

 Exhibit PD: Production Measurements 3-75

 Exhibit Parker: Parker Three-Step 3-85

 Exhibit GF: General Field Data 3-87

 Exhibit RH: Rangeland Health Evaluation Matrix 3-117

 Exhibit CD: Comments Data 3-118

RANGELAND MONITORING AND EVALUATION

INTRODUCTION	4-1
TYPES OF MONITORING	4-2
THE ALLOTMENT MANAGEMENT PLAN.....	4-3
SHORT-TERM MONITORING	4-6
LONG-TERM TREND MONITORING.....	4-11
GRAZING CAPACITY DETERMINATION	4-16
Exhibit SH: Stubble Height.....	4-17
Exhibit HU: Herbage Left Ungrazed	4-21
Exhibit VO: Visual Obstruction.....	4-23
Exhibit US: Utilization Study (Paired-Plot).....	4-27
Exhibit UG: Utilization Gauge.....	4-31
Exhibit OE: Ocular Estimates	4-39
Exhibit CF: Cover-Frequency Transect	4-47
Exhibit LI: Line Intercept.....	4-49
Exhibit RN: Rooted Nested Frequency.....	4-51
Exhibit SA: Streambank Alteration	4-63
Exhibit SD: Shrub Density and Age/Form Class	4-67
Exhibit PU: Production-Utilization Survey	4-69
Exhibit PG: Pellet Group Counts	4-73
Exhibit GRI: Grazing Response Index.....	4-75

RIPARIAN ECOSYSTEMS

WHAT IS RIPARIAN?	5-1
QUALITATIVE ASSESSMENT	5-3
QUANTITATIVE ASSESSMENT	5-5
Exhibit PFC: Proper Functioning Condition.....	5-11
Exhibit CS: Cross-Section Composition	5-15
Exhibit GL: Green Line Vegetation Composition	5-19
Exhibit WS: Woody Species Regeneration.....	5-23
Exhibit RC: Riparian Characteristics Evaluation.....	5-27

GLOSSARY

APPENDICES

Implementation of Section 8 Public Rangelands Improvement Act of 1978	A
Assessing the Risk of Introducing Noxious Weeds.....	B
Rangeland Statistics.....	C
List of Floras and Plant Identification Aids.....	D
Rocky Mountain Region Vegetation Classifications.....	E
Cage Construction	F
Riparian Community Types.....	G
Management Interpretations of Various Stream Types	H
Field Key to Common Willows.....	I
National Hierarchical Framework of Ecological Units	J
State Historic Office...Memorandum of Understanding.....	K
Resource Value Ratings.....	L
Rangeland Analysis: Inventory and Monitoring Forms	M

LITERATURE CITED

INDEX

LIST OF FIGURES

2-1. Integrating ESA and NEPA.....	2-4
2-2. Rangeland Planning Process	2-10
2-3. NEPA Documentation.....	2-15
3-1. Rangeland Inventory Process	3-2
3-2. Relationship of Potential Natural Communities and Seral Communities.....	3-11
3-3. Sample Map.....	3-23
3-4. Allotment Map Legend	3-25
3-5. Allotment Map (Scale 1:24,000).....	3-26
3-6. Ocular Plant Composition Photograph Layout	3-35
3-7. Cover-Frequency Photograph Layout	3-36
OP-1. Ocular Plant Composition Plot Layout	3-38
CF-1. Cover-Frequency Frames (20x50 cm).....	3-50
CF-2. Cover-Frequency Transect Layout.....	3-51
CF-3. Live Foliar Cover Diagram	3-52
LI-1. Measuring Shrub Intercept	3-64
LI-2. Measuring Shrub Intercept	3-64
LI-3. Measuring Shrub Intercept	3-64
LI-4. Degree of Hedging.....	3-70
VO-1. Robel Pole.....	4-24
UG-1. Utilization Gauge.....	4-34
UG-2. Species Scales (1).....	4-35
UG-3. Species Scales (2).....	4-36
RN-1. Rooted Nested Frequency Transect Layout.....	4-52
RN-2. Rooted Nested Frequency Frame.....	4-54
PU-1. Use Zone Map	4-70
5-1. Vegetation Composition Within a Complex	5-16
5-2. Green Line Vegetation Composition Measurement.....	5-21
5-3. Shrub Count (by Age Class).....	5-24
C-1. Species-Area Curves.....	C-3
H-1. Longitudinal, Cross-Sectional, and Plan Views of Major Stream Types	H-4
H-2. Illustrative Guide Showing Cross-Sectional Configuration, Composition, and Delineative Criteria of Major Stream Types	H-5
H-3. Meander Width Ration (Belt Width/Bankfull Width) by Stream Type Categories.....	H-6
H-4. Examples and Calculations of Channel Entrenchment	H-7

LIST OF GRAPHS

C-1. 90 Percent Confidence Level, $n > 5$	C-21
C-2. 80 Percent Confidence Level, $n > 5$	C-22
C-3. 90 Percent Confidence Level, $n \leq 5$	C-23
C-4. 80 Percent Confidence Level, $n \leq 5$	C-24

LIST OF TABLES

1-1. National Hierarchical Framework of Ecological Units.....	1-3
3-1. Guidelines for Analysis Intensities	3-3
3-2. Definition of Status in Rangeland Analysis and Management Context	3-11
3-3. Desired Condition Status.....	3-13
3-4. Interpreting Rangeland Management Status from Desired Condition Status and Trend.....	3-14
3-5. Daily Forage Consumption Rates.....	3-18
CF-1. Midpoint Multiplication Table for ‘Daubenmire’ Cover Classes	3-57
CF-2. Midpoint Multiplication Table for ‘10-Classes’ Cover Classes.....	3-58
PD-1. Production Conversion Factors	3-75
PD-2. Percentage of Air-Dry Matter in Harvested Plant Material at Various Stages of Growth.....	3-76
GF-1. Agency Codes	3-88
GF-2. Forest and District Codes	3-88
GF-3. County Codes	3-91
GF-4. Special Feature Codes	3-96
GF-5. Relief Types	3-97
GF-6. Primary Lithology	3-97
GF-7. Secondary Lithology	3-98
GF-8. Erosion Status Types.....	3-99
GF-9. Erosion Types.....	3-99
GF-10. Cover Classes (‘Daubenmire’).....	3-100
GF-11. Cover Classes (‘10-Classes’)	3-100
GF-12. Fuel Models.....	3-102
GF-13. Event Intensities	3-103
GF-14. Disturbance Types.....	3-104
GF-15. Animal Use Evidence Types	3-105
GF-16. Cover Types	3-107
GF-17. PNV Formation Types	3-110
HU-1. Production Conversion Factors	4-21
VO-1. Upland Bird Nesting Cover Classes, Fort Pierre National Grassland	4-23

OE-1. Herbaceous Utilization Classes.....	4-40
OE-2. Browse Utilization Classes	4-41
OE-3. Aspen-Weed Utilization Classes.....	4-42
RN-1. Rooted Nested Frequency Sampling Schemes	4-53
RN-2. Demonstration of Sampling Adequacy.....	4-53
RN-3. Nested Plot Sizes	4-54
5-1. Watershed Condition Classes.....	5-5
C-1. Sampling Adequacy: Site A.....	C-3
C-2. Sampling Adequacy: Site B.....	C-3
C-3. Data Requirements for Applying Coefficients of Variation and Confidence Intervals	C-4
C-4. <i>t</i> -test Values	C-19
Stream Reach Channel Type Key (Rosgen).....	H-2
Rosgen Stream Type Characteristics	H-3
Summary of Delineative Criteria for Broad-Level Classification.....	H-8
J-1. National Hierarchy of Ecological Units	J-17
J-2. Principal Map Unit Design Criteria of Ecological Units.....	J-18
J-3. Map Scale and Polygon Size of Ecological Units	J-19
Grass and Grasslike Resource Value Ratings.....	L-3
Forbs Resource Value Ratings	L-7
Shrubs and Trees Resource Value Ratings.....	L-14

LIST OF SAMPLE FORMS

BLM-PFC	Proper Functioning Condition	5-13	M-51
FS-7100-41	Photographic Work Requisition	3-22	M-21
R2-2200-CD	Comments Data	3-120	M-6
R2-2200-CF	Cover Frequency Data	3-59	M-9
R2-2200-CFSum	Cover Frequency Summary	3-61	M-11
R2-2200-CS	Cross-Section Composition		M-53
R2-2200-CSSum	Cross-Section Summary	5-17	M-54
R2-2200-GA	Grazing Allotment Summary and Livestock Capacity Estimate	3-19	M-25
R2-2200-GF	General Field Data.....	3-115	M-3
R2-2200-GL	Green Line Transect		M-55
R2-2200-GLSum	Green Line Summary.....	5-22	M-56
R2-2200-HU	Herbage Left Ungrazed.....	4-22	M-29
R2-2200-LI	Line Intercept Data	3-71	M-13
R2-2200-LISum	Line Intercept Summary	3-73	M-15
R2-2200-OEA	Ocular Estimation (Aspen-Weed Species)	4-45	M-39
R2-2200-OEB	Ocular Estimation (Key Browse Species)	4-44	M-38
R2-2200-OEH	Ocular Estimation (Key Herbaceous Species).....	4-43	M-37
R2-2200-OP	Ocular Plant Composition.....	3-47	M-7
R2-2200-PD	Production Data	3-81	M-17
R2-2200-PDSum	Production Summary	3-83	M-19
R2-2200-PG	Pellet Group Counts.....	4-74	M-49
R2-2200-PU	Production Utilization.....	4-71	M-47
R2-2200-RCL	Riparian Characterization: Lakes and Reservoirs.....	5-29	M-60
R2-2200-RCS	Riparian Characterization: Streams	5-28	M-59
R2-2200-RCW	Riparian Characterization: Woody Draws.....	5-30	M-61
R2-2200-RH	Rangeland Health Evaluation	3-119	M-5
R2-2200-RN	Rooted Nested Frequency Data	4-59	M-41
R2-2200-RNSum	Rooted Nested Frequency Summary	4-61	M-43
R2-2200-SA	Streambank Alteration	4-65	M-45
R2-2200-SC	Similarity Coefficient	3-15	M-23
R2-2200-SH	Stubble Height	4-19	M-27
R2-2200-UG	Utilization Gauge.....	4-37	M-35
R2-2200-US	Utilization Study Data (Paired-Plot).....	4-29	M-33
R2-2200-VO	Visual Obstruction (Robel Pole).....	4-25	M-31
R2-2200-WS	Woody Species Regeneration		M-57
R2-2200-WSSum	Woody Species Regeneration Summary	5-25	M-58
	Noxious Weed Risk Assessment		B-2
Form C-1	Computation of Coefficient of Variation and Confidence Intervals	C-7	C-15
Form C-2	Determine Significant Change.....	C-13	C-17